



Welcome to

Level 3 Health and Social Care

Welcome to Health and Social Care. The Level 3 Extended Diploma in Health and Social Care includes a wide range of optional units that allow you to pursue an interest in the specific areas of social care, health studies and health sciences.

In order to give you the best possible start to your vocational study, here are a few resources and tasks to help prepare you for level 3.

What you can read

CACHE Technical Level 3 Extended Diploma in Health and Social Care (Cache Level 3). Although there is a cost for this textbook, it is advised that you do purchase this if you do go on to study this course.

ISBN: 9781510402928

Available at: Amazon Paperback Edition £24 (and other book sellers)

Hodder Education Student eBook 2 year access £10.80

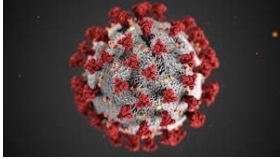


What are some of the topics you will cover

Year 1 Subjects

Equality Diversity & Rights, Human Growth & Development, Safeguarding, Communication, Infection Prevention, Sociology, Psychology, Working in Health and Social Care, Reflective Practice

Tasks that you can do to prepare you

Link to the course/specification	Task
<p>Unit CM5 Infection Prevention and Control</p> <p>Topic areas covered: Microorganisms Transmission of infection Personal Protective Equipment PPE COSHH and RIDDOR Antibiotic Resistance</p>	<p>Activity</p> <p>The key terms used in this activity are words that you may have already come across due to the current Coronavirus pandemic. These terms are regularly used within IPC. You should familiarise yourself with terminology used and research the definitions of any you are unsure of.</p> <p><u>Coronavirus Pandemic:</u></p> <p>Type of pathogenic microorganism? How is it transmitted? Symptoms? How can we protect ourselves?</p>  <p>The following video will help you answer the questions. https://www.youtube.com/watch?v=ArFQdvF8vDE</p>
<p style="text-align: center;"><u>Sociology</u></p> <p>How would you define sociology? How does sociology differ from ‘common sense assumptions of everyday life’? For example, what does sociology study? What is the overall aim of sociology? Why is it important that we understand people and different groups in society?</p> <p><i>“Poverty should not exist in a civilised society. It is a shame on our country and the people who run it. The reason people are poor is because there is no incentive to get out of the poverty trap. It is the government’s fault that this is the case. They are responsible for running the country and should set in place measures which will motivate people to leave this condition behind and fully participate in society. Poor health is embedded within poverty-stricken communities”</i></p> <p>Your task is to read the above statement, reflect, and form your own conclusion. Following this, I would like you to write down:</p> <p style="padding-left: 40px;">Which parts of the stories do you consider to be true?</p> <p style="padding-left: 40px;">Where does the responsibility for poverty and poor health rest? With the individual or wider social and governmental factors?</p> <p>During this task, I would urge you to ask yourself, how have you come to form this opinion, what influences your thinking, how could the study of sociology help to shed some light on health and well-being? Complex, isn’t it?</p>	

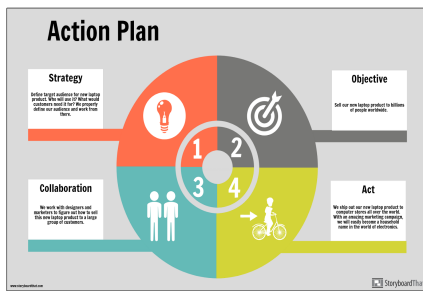
Personal and professional development

Knowing where you want to go/progress to will help you focus. By having a plan in place helps you work towards your ideal destination.



Task:

Set yourself an action plan of things you want to achieve over the summer and jobs to do to prepare you for college life.



Research your ideal **progression routes**.

In Year 2, you have a choice of pathways to take depending on your ideal route. Each pathway will have different units within them. Although these options don't have to be decided until the closing stages of Year 1, it would be beneficial to start thinking of your options now.

Health Pathway	Social Pathway
Microbiology Medication Science of Nutrition	Learning Disabilities Mental Health Dementia

Compulsory Modules
Anatomy & Physiology Empowerment Protection of Children, Young People & Adults Public Health Research Personal & Professional Development

This activity links to:-

Equality Diversity & Rights, Communication, Human Growth & Development, Psychology and Working in health and social care.

Watch the programme old peoples home for 4 year olds by following the link below

<https://www.channel4.com/programmes/old-peoples-home-for-4-year-olds/on-demand/64374-001>

1. Explain how you think it will improve health and happiness for the older group?
2. Explain what benefits the younger group will gain from this experience?
3. Is this an environment you would like to work in? Write a paragraph on why.

Another crucial element of the course is **placement**. You do have a choice of where you would like your placement to be (within reason). We can assist you with this, however, knowing the type of setting you would like to be placed in will give you a good head start.

Some examples:

Primary School , Nursery , GP's Surgery , Care Home, Day Care centres, Working with people with Learning Disabilities, Hospital, Revitalise Sandpipers, Pharmacy

Nursing Cadets

Task: Identify 6 different types of nursing?



Are you interested in becoming a **nurse cadet** at college? This involves completing over 450 hours of placement experience with East Lancs Hospitals Trust - a massive boost to your experience log!

Fun to finish

Anagrams

Pliable Hutch, Detain Em,
Camped In, Arcade Imp
Ha Spoilt

Emoji Quiz, All Illnesses



- Q1: ● 🦴
- Q2: 🦶 👄
- Q3: 🤲 🐝
- Q4: 🐷 🐔
- Q5: 📺 😬
- Q6: E 🦗 📌 A
- Q7: 🐓 📌 🐄
- Q8: 🍺 🦠 📌
- Q9: 🇬🇧 🍲 📌 ID 😬
- Q10: 🐕 🛎️ 📌 A

Contact information

If you have questions regarding this or any other Health and Social Care course at Burnley College, please contact;

hss@burnley.ac.uk

We look forward to seeing you in September.